



FILDEX[®]
TREAT YOUR ENGINE

**AUTOMOTIVE
FILTERS &
LUBRICATION
PRODUCTS**

FOR ALL MAKES AND MODELS



FILDEx® is a brand of high quality automotive filters, oil, air, fuel, cabin and synthetic motor oil, transmission oil and automatic transmission fluids, brake fluids and anti-freeze fluids and coolant. Our product range covers all makes and models of cars, vans and rugged vehicles on the world market. Fildex products are manufactured according to the Management Certificate ISO9001: 2000 quality management certification.

All products are designed, engineered and tested in North America and assembled in Europe, Mexico & Asia. FILDEx® is owned by Fildex Filters Canada Corp., an international company based in Vancouver, Canada, with worldwide distribution networks in over 35 countries annually.

We are committed to keep consumers satisfied by incorporating the newest modern technology, best raw material and skilled professional staff to provide them with OE quality products. FILDEx® products are currently exported to different markets around the world. These markets include: North America, South America, Middle East, and Africa.

A green arrow-shaped graphic pointing to the right, containing the text "GO GREEN" in white, bold, uppercase letters.

REDUCE YOUR FUEL CONSUMPTION

WITH FILDEX® PREMIUM FILTERS

The simplest solution to protect our environment from pollution is to reduce fuel consumption. Over 750 million motor vehicles have been registered worldwide until 2010. If present trends continue, the number of cars on Earth will double in the next 30 years. This shows the extra importance of using all means to lower the fuel consumption in automobiles.

Besides weather and road conditions, and driving habits, auto filters play an important role in raising the efficiency of the engine in general and the fuel system in particular.

We recommend you to use FILDEX® filters to increase the fuel economy of your car. Increased fuel economy means less gas consumption, and this means protecting our environment. Make sure your vehicle is serviced properly by qualified technicians. Engine settings and many other mechanical actors can all affect fuel consumption.



FILDEX® PREMIUM OIL FILTERS

RECOMMENDED FOR ALL PASSENGER CARS
AND COMMERCIAL VEHICLES



The environmentally friendly FILDEX® oil filters are essential to the auto engine. Using FILDEX® quality oil filters will maximize engine efficiency and life span. As oil circulates and passes through the filter, filter protects the engine by trapping any redundant particles. Oil Filtration is vital since proper lubrication is necessary for the engine. FILDEX® oil filters offer the proper lubrication, for your engine.

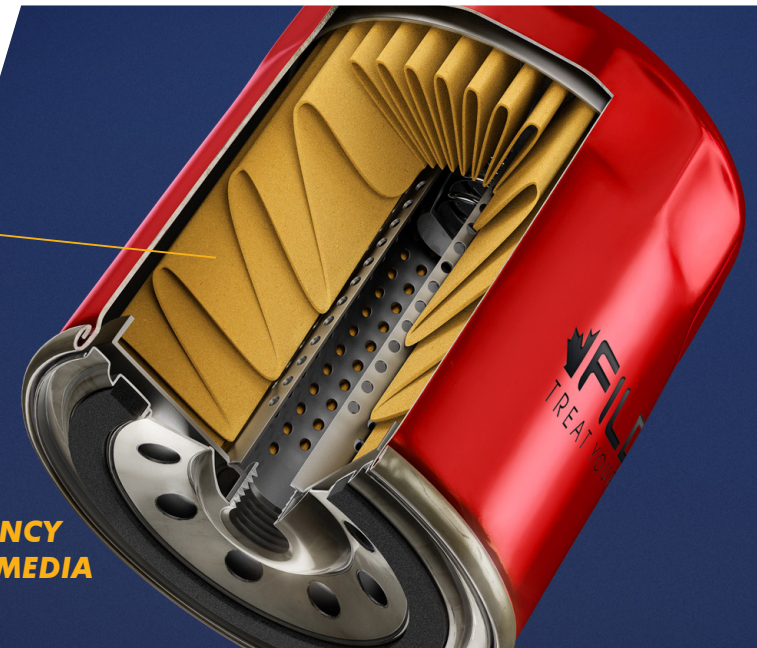
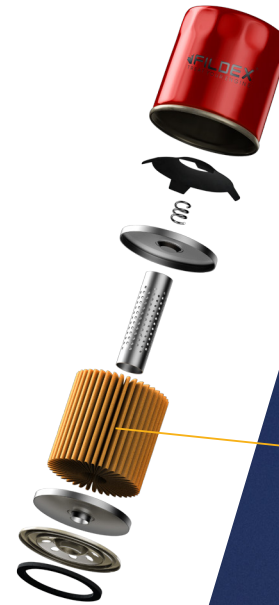
FILDEX® OIL FILTERS FEATURES

- Long service life
- Low flow resistance
- Extra dirt-holding capacity*
- Extra dirt-trapping capacity*
- High quality material
(filter shell, center tube, gasket, etc.)
- High filtering precision
& maximum engine protection

3X^{*}
ENGINE
PROTECTION

2X^{*}
LIFETIME

*FILDEX® Filters give 3X more engine protection and 2X more useful lifetime than the average of leading economy filters.



**HIGH
EFFICIENCY
FILTER MEDIA**

FILDEX® PREMIUM FUEL FILTERS

RECOMMENDED FOR ALL PASSENGER CARS
AND COMMERCIAL VEHICLES



High quality fuel filter is necessary in order to provide durability for the engine. Clean fuel is an essential requirement of a fine operating engine. Fuel filter ensures that the fuel system is not polluted with the contaminants. Any wear on the injection system will increase fuel consumption, and will result in low fuel economy and low engine efficiency.

**HIGH EFFICIENCY
FILTER MEDIA**

20,000 KM
RECOMMENDED LIFETIME

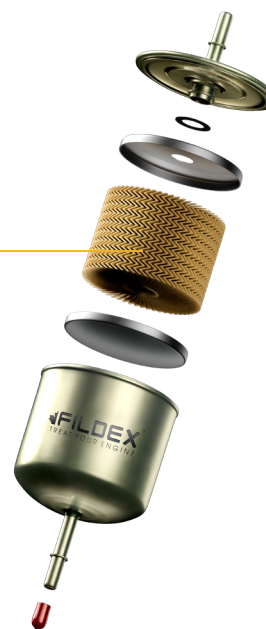
*See vehicle manufacturer's recommendation for change interval.

**WHY FILDEX® FUEL FILTERS
ARE RECOMMENDED**

- Operational safety for engines.
- Protection for injection system from corrosion.
- Removal of unwanted fuel contaminants such as dust, rust or water which cause wear.
- Protection for the highly delicate injection mechanism and the carburetor.

**FILDEX®
FUEL FILTERS
FEATURES**

- High filtering precision
- High fuel/water separation
- High efficiency and performance
- High quality material
- Long service durability



FILDEX® PREMIUM AIR FILTERS

RECOMMENDED FOR ALL PASSENGER CARS
AND COMMERCIAL VEHICLES



FILDEX® premium air filters deliver clear air, free of most pollutants and particles to the engine. As a result the combustion chamber remains highly robust and functional at all times, leading to a longer life for the engine. Our advance filtration mechanism, make it impossible for harmful particles to escape. Our improved duct holding capacity increases the filters' life span.

Therefore, FILDEX® filters undeniably exceed OEM specifications. When tested FILDEX® air filters show an increase in fractional efficiency and a lower media restriction due to high filtration efficiency. Engine protection is essential and relevant to many other important

functions, such as, fuel efficiency and temperature control.

FILDEX® premium air filters offer an all-over engine protection by producing durable framing, media support and stronger seal protection.

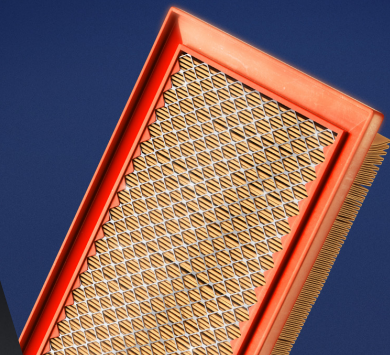
15,000 KM*

RECOMMENDED LIFETIME

*See vehicle manufacturer's recommendation for change interval.

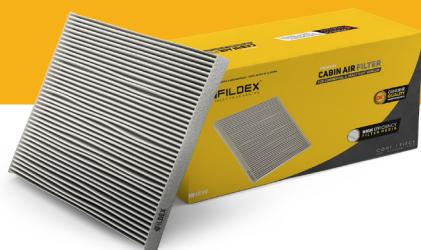
FILDEX® AIR FILTERS FEATURES

- High separation of impurities from in-flow air.
- Maximizes optimum combustion and smooth operation.
- Reduces engine noise long service span.
- High quality media and great adhesion to end cap.



FILDEX® PREMIUM CABIN FILTERS

RECOMMENDED FOR ALL PASSENGER CARS
AND COMMERCIAL VEHICLES



15,000 KM*

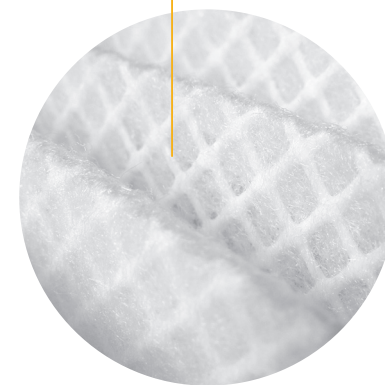
RECOMMENDED LIFETIME

*See vehicle manufacturer's
recommendation for change
interval.

FILDEX® Cabin Air Filters deliver OE fit, measurement and quality for fresher, cleaner, healthier passenger cabin air. Pollen and harmful substances inside a vehicle can become six times more concentrated than outside. FILDEX® Premium Cabin Filters prevent harmful pollen from entering the vehicle interior and protect passengers inside the car.

A cabin filter works much like the air filter used with your air conditioning system in your home. Replace your cabin filter regularly with a FILDEX® Premium Cabin Filter and trap close to 100% of airborne contaminants before they enter the interior of your vehicle through the heating and air conditioning system.

**HIGH
EFFICIENCY
FILTER MEDIA**



FILDEX® ACTIVATED CHARCOAL CABIN AIR FILTERS

FILDEX® Activated Charcoal Filters can trap close to 100% of airborne contaminants and foul-smelling gases and odors. FILDEX® Premium Cabin Filters absorb up to 100% of all pollen, dust particles and harmful substances. This results in a noticeable improvement in the air quality inside the vehicle. FILDEX® Activated Charcoal Filters go one step further than particulate filters. FILDEX® Activated Charcoal Cabin Air Filters

have a multiple layer design that includes an additional carbon layer that absorbs toxic and foul-smelling gases such as ozone, nitrogen oxide, sulfur dioxide and hydrocarbons, and an additional cover layer for extra protection. Cabin filters are generally found in one of three locations: under the hood, inside the glove box or under the dashboard. Recommended replacement is every 15,000 to 20,000 KM, or once a year.

FILDEX® PREMIUM MOTOR OIL

PASSENGER CARS & SUVs

MADE IN BELGIUM



MADE IN GERMANY



0W20 SX

FULLY SYNTHETIC

PERFORMANCE LEVEL
APPLICATIONS

ACEA: A1/B1-10
API: SN
MB: 229.3/226.5
VW: 502.00/505.00
BMW: Longlife-01
Renault: RN0700

This product has been specifically developed to meet the challenging requirements for hybrid cars, where fuel economy and CO2 reduction is important. It provides the performance needed for the most recent requirements for gasoline-fueled US and Asian (i.e. Honda, Toyota, Mitsubishi) passenger cars.

Density at 15 °C	0.846 kg/l
Viscosity 40 °C	46.70 mm ² /s
Viscosity 100 °C	8.54 mm ² /s
Viscosity Index	162.00
Flash Point COC	230.00 °C
Pour Point	-48.00 °C
Total Base Number	9.70 mgKOH/g
Sulphate Ash	1.22 %
Viscosity -35 °C	5320.00 mPas

API
CERTIFIED

AVAILABLE SIZES: 1L

4L

5L

20L

60L

210L

IBC





0W30 SX FULLY SYNTHETIC

ACEA: A3/B4-12
BMW: LONGLIFE-04 Level
API: SN/CF
MB: 229.31 Level

This product is aimed and specially formulated for usage in diesel and gasoline engines of BMW group passenger vehicles. It can also be used in other OEM diesel and gasoline engines where there is a need for a 0W30 grade low SAPS oil.

Density at 15 °C	0.848 kg/l
Viscosity 40 °C	56.60 mm ² /s
Viscosity 100 °C	10.20 mm ² /s
Viscosity Index	170.00
Flash Point COC	230.00 °C
Pour Point	-51.00 °C
Total Base Number	10.50 mgKOH/g
Sulphate Ash	1.33 %
Viscosity -35 °C	5400.00 mPas



0W40 SX FULLY SYNTHETIC

ACEA: A3/B4-12
API: SN
BMW: LONGLIFE-01
MB: 229.5
PORSCHE: A40

All 4-stroke gasoline engines, four-valve, turbocharged, and 4-stroke diesel engines with or without turbo. This oil is not suitable for diesel particulate filters.

Density at 15 °C	0.846 kg/l
Viscosity 40 °C	83.70 mm ² /s
Viscosity 100 °C	14.00 mm ² /s
Viscosity Index	173.00
Flash Point COC	232.00 °C
Pour Point	-46.00 °C
Total Base Number	10.50 mgKOH/g
Sulphate Ash	1.33 %
Viscosity -35 °C	6000.00 mPas



5W20 ECO FULLY SYNTHETIC

API: SN
FORD: WSS-M2C945-A
GM: dexos 1
ILSAC: GF-5

This motor oil has been specially designed to meet the latest requirements for most American and Asian passenger cars, SUVs and light vans. Originally intended for fuel-injected gasoline engines, without turbo-charging, and with multi-valves.

Density at 15 °C	0.8520 kg/l
Viscosity 40 °C	48.20 mm ² /s
Viscosity 100 °C	8.57 mm ² /s
Viscosity Index	156.00
Flash Point COC	234.00 °C
Pour Point	-45.00 °C
Total Base Number	7.90 mgKOH/g
Sulphate Ash	0.89 %
Viscosity -30 °C	4920.00 mPas

FILDEX® PREMIUM MOTOR OIL



5W20 MF
FULLY SYNTHETIC



5W30 LGO
FULLY SYNTHETIC



5W30 C4
FULLY SYNTHETIC

PERFORMANCE LEVEL
APPLICATIONS

ACEA: A1/B1-12
API: SN
FORD: WSS-M2C948-B
JAGUAR / LAND ROVER STJR.03.5004

Meets the requirements of the Ford WSS-M2C948-B specification and is mandatory for Ford EcoBoost 1.0 3-cylinder engines and is required for further EcoBoost gasoline engines. This oil can also be used where the vehicle manufacturer specifies a motor oil ACEA A1/B1 or API SN.

ACEA: A1/B1/A5/B5-12
API: SL/CF

This oil can be used in 4-stroke gasoline engines, four-valve, turbo. 4-stroke diesel engines with or without turbo, without diesel particulate filter (DPF).

ACEA: C4-12
MB: 226.51
RENAULT: RN 0720

Gasoline and diesel engines of passenger cars with or without turbo which are equipped with a DPF and a TWC (Three-Way Catalyst).

Density at 15 °C	0.851 kg/l
Viscosity 40 °C	42.30 mm ² /s
Viscosity 100 °C	7.90 mm ² /s
Viscosity Index	162.00
Flash Point COC	220.00 °C
Pour Point	-39.00 °C
Total Base Number	7.60 mgKOH/g
Sulphate Ash	0.80 %
Viscosity -30 °C	5500.00 mPas

Density at 15 °C	0.860 kg/l
Viscosity 40 °C	58.60 mm ² /s
Viscosity 100 °C	10.10 mm ² /s
Viscosity Index	161.00
Flash Point COC	230.00 °C
Pour Point	-33.00 °C
Total Base Number	8.10 mgKOH/g
Viscosity -30 °C	6290.00 mPas

Density at 15 °C	0.851 kg/l
Viscosity 40 °C	66.00 mm ² /s
Viscosity 100 °C	12.10 mm ² /s
Viscosity Index	174.00
Flash Point COC	228.00 °C
Pour Point	-39.00 °C
Total Base Number	7.30 mgKOH/g
Sulphate Ash	0.49 %
Viscosity -30 °C	6020.00 mPas



5W30 DX FULLY SYNTHETIC

ACEA: C3-12
API: SN/CF
BMW: LONGLIFE-04
VW: 502 00
VW: 505 00
VW: 505 01

This dexos 2TM approved oil is required for all new GM/Opel/Vauxhall/Chevrolet diesel and gasoline models. GM/Opel has advised that the dexos 2TM specification is backward compatible to older GM/Opel specifications (GM-LL-A-025 and GM-B-LL-025). The majority of GM/Opel/Vauxhall/Chevrolet diesel and gasoline vehicles can use dexos 2TM lubricants. C2* meets all engine protection requirements of ACEA C2.

Density at 15 °C	0.851 kg/l
Viscosity 40 °C	72.60 mm ² /s
Viscosity 100 °C	12.50 mm ² /s
Viscosity Index	172.00
Flash Point COC	230.00 °C
Pour Point	-36.00 °C
Total Base Number	7.40 mgKOH/g
Sulphate Ash	0.78 %
Viscosity -30 °C	6136.00 mPas



5W40 SX FULLY SYNTHETIC

ACEA: A3/B4-12
API: SN/CF
BMW: LONGLIFE-01
MB: 226.5
MB: 229.3
OPEL: GM-LL-B-025
Fiat 9.55535-M2

This oil is used in gasoline engines of cars, which demand the highest performance and diesel engines of passenger cars with turbo and direct fuel injection. The high quality allows extended drain intervals, according to the specific requirements of manufacturers.

Density at 15 °C	0.856 kg/l
Viscosity 40 °C	86.00 mm ² /s
Viscosity 100 °C	14.40 mm ² /s
Viscosity Index	175.00
Flash Point COC	220.00 °C
Pour Point	-33.00 °C
Total Base Number	9.60 mgKOH/g
Sulphate Ash	1.20 %
Viscosity -30 °C	6100.00 mPas



10W30 +B4 SEMI SYNTHETIC

ACEA: A3/B3-12
ACEA: A3/B4-08
API: SL/CF
MB: 229.1

4-stroke diesel engines with or without turbo of passenger cars. 4-stroke gasoline engines.

Density at 15 °C	0.869 kg/l
Viscosity 40 °C	74.90 mm ² /s
Viscosity 100 °C	11.80 mm ² /s
Viscosity Index	153.00
Flash Point COC	218.00 °C
Pour Point	-36.00 °C
Total Base Number	8.00 mgKOH/g
Sulphate Ash	1.20 %
Viscosity -30 °C	5070.00 mPas



15W40 PRO-TEC MINERAL

API: SJ/CG-4, CF
 MB: 228.1, 229.1
 ACEA: A3-B3-10, B3 -B4-08, E2-level
 MAN: M-3275-1
 VOLVO: VDS level
 CAT: TO-2
 ALLISON: C4

Universal engine oil for four stroke diesel engines operating at high speed, heavy-duty vehicles (less than 0.05 wt% sulfur), as well as construction equipment (less than 0.5 wt% sulfur). This oil is ideal for engines designed to meet emission standards of 1994. This oil can be used in all gasoline engines in order to comply with strict operating rules.

Density at 15 °C	0.883 kg/l
Viscosity 40 °C	110.60 mm ² /s
Viscosity 100 °C	14.70 mm ² /s
Viscosity Index	137.00
Flash Point COC	230.00 °C
Pour Point	-30.00 °C
Total Base Number	10.20 mgKOH/g
Sulphate Ash	1.29 %
Viscosity -20 °C	6600.00 mPas



15W50 PRO-TEC MINERAL

ACEA: A3/B3-12
 ACEA: A3/B4-12
 ALLISON : C4 Level
 API: SL/CF
 CATERPILLAR: TO-2

All gasoline engines (multivalves, turbo, etc...) from 1997 to 2001. All turbo diesel engines, even with extended drain intervals of passenger cars and heavy trucks.

Density at 15 °C	0.878 kg/l
Viscosity 40 °C	128.20 mm ² /s
Viscosity 100 °C	17.90 mm ² /s
Viscosity Index	149.00
Flash Point COC	230.00 °C
Pour Point	-27.00 °C
Total Base Number	8.00 mgKOH/g
Sulphate Ash	1.02 %
Viscosity -20 °C	6250.00 mPas



20W50 SN MINERAL

ACEA: A3/B3-10
 ACEA: A3/B4-08
 API: SN/CF
 MB: 229.1

This oil can be applied in modern 4-stroke gasoline (multi valves, turbo, etc.) and 4-stroke diesel engines, with or without turbo.

Density at 15 °C	0.885 kg/l
Viscosity 40 °C	151.00 mm ² /s
Viscosity 100 °C	17.50 mm ² /s
Viscosity Index	125.00
Flash Point COC	238.00 °C
Pour Point	-24.00 °C
Total Base Number	10.20 mgKOH/g
Sulphate Ash	1.29 %
Viscosity -15 °C	8000.00 mPas

FILDEX® PREMIUM MOTOR OIL

TRUCKS & COMMERCIAL VEHICLES

MADE IN BELGIUM 

MADE IN GERMANY 



5W30 PRO-TEC S

FULLY SYNTHETIC

APPLICATIONS // PERFORMANCE LEVEL

ACEA: E4-12
ACEA: E7-12
API: CI-4
DAF: HP1/HP2
DEUTZ: DQC-IV-10
MACK: EO-N
MAN: M3277 / M3377
MB: 228.5
CUMMINS: 20076/20078

MTU: Type 3
RENAULT: RD-2
RENAULT: RLD
RENAULT: RLD-2
RENAULT: RXD
SCANIA: LDF
VOLVO: VDS-3
CAT: ECF-2

It is intended for truck fleet operators, seeking the best available lubricating oil technology, to meet the increasingly stringent exhaust limits imposed on diesel engines in Europe. Because of the very high detergency, this oil is not suitable for gasoline engines and vehicles equipped with particulate filters.

Density at 15 °C	0.855 kg/l
Viscosity 40 °C	71.60 mm ² /s
Viscosity 100 °C	12.17 mm ² /s
Viscosity Index	168.00
Flash Point COC	224.00 °C
Pour Point	-39.00 °C
Total Base Number	12.20 mgKOH/g
Sulphate Ash	1.35 %
Viscosity -30 °C	6420.00 mPas

AVAILABLE SIZES: 1L



4L



5L



20L



60L



210L



IBC





5W40 PRO-TEC ULTRA FULLY SYNTHETIC

ACEA: E7-12, E9-12
API: CJ-4/SM
MB-Approval 228.31
MAN: M 3575
VOLVO: VDS-4
MACK EO-O Premium Plus,
Renault VI RLD-3
Meets the requirements
of Cummins CES 20081
Detroit Diesel
93K218/93K215/93K214
CAT: ECF-2/ECF-3

This heavy duty engine oil is suitable for use in both on-road and off-highway applications. This engine oil contributes to low exhaust emission and particle levels benefits highly to the lifetime of emission control systems. This product complies with and exceeds the requirements of API CJ-4. By meeting the requirements of OEM's in Europe and North America this product has a wide choice of application possibilities. This product can be applied in Euro 5 engines with SCR exhaust gas system and in Euro 3 and Euro 4 engines when indicated by the manufacturer.

Density at 15 °C	0.856 kg/l
Viscosity 40 °C	88.40 mm ² /s
Viscosity 100 °C	13.90 mm ² /s
Viscosity Index	161.00
Flash Point COC	220.00 °C
Pour Point	-36.00 °C
Total Base Number	10.30 mgKOH/g
Sulphate Ash	0.95 %
Viscosity -30 °C	5740.00 mPas



10W30 PRO-TEC ULTRA SEMI SYNTHETIC

ACEA: E7-08 Issue 2
ACEA: E9-08 Issue 2
API: CJ-4/SM
CATERPILLAR: ECF-2
CATERPILLAR: ECF-3
CUMMINS: CES 20081
DEUTZ: DQC-III-10 LA
MACK: EO-O Premium Plus
MAN: M3575
MB: 228.31
RENAULT: RLD-3
VOLVO: VDS-4

Suitable for all four-stroke diesel engines of trucks, with or without catalyts (e.g. SCR) or particulate filter. Meets most American and European manufacturers requirements and can also be used in older engines (Euro III and IV). This lower viscosity grade has been specifically developed to achieve better fuel economy.

Density at 15 °C	0.864 kg/l
Viscosity 40 °C	79.90 mm ² /s
Viscosity 100 °C	12.00 mm ² /s
Viscosity Index	145.00
Flash Point COC	226.00 °C
Pour Point	-36.00 °C
Total Base Number	8.90 mgKOH/g
Sulphate Ash	1.00 %
Viscosity -25 °C	6120.00 mPas



10W40 PRO-TEC X FULLY SYNTHETIC

ACEA: E6-12
ACEA: E7-12
API: CI-4
CUMMINS: CES 20076
CUMMINS: CES 20077
DAF Long Drain
DEUTZ: DQC-III-10 LA
JASO: DH-2
MACK: EO-N
MAN: M3271-1
MAN: M3477
MB: 226.9
MB: 228.51
MTU: Type 3.1
RENAULT: RGD
RENAULT: RLD-2
RENAULT: VI RXD
VOLVO: VDS-3

Specifically recommended for large truck engines to satisfy the EURO V-standard and suitable for most Euro VI engines. Perfectly compatible with all after-treatment systems and devices (EGR, SCR, DPF, etc.) in combination with low sulfur diesel (max 50 ppm). Can also be used in older diesel engines (Euro II, III, IV). Also suitable for some gas-powered engines (CNG).

Density at 15 °C	0.863 kg/l
Viscosity 40 °C	95.20 mm ² /s
Viscosity 100 °C	14.50 mm ² /s
Viscosity Index	153.00
Flash Point COC	222.00 °C
Pour Point	-36.00 °C
Total Base Number	10.10 mgKOH/g
Sulphate Ash	0.95 %
Viscosity -25 °C	6580.00 mPas

FILDEX® PREMIUM MOTOR OIL



15W40 PRO-TEC M
MINERAL



15W40 PRO-TEC ULTRA
SEMI SYNTHETIC



15W50 PRO-TEC TS
MINERAL

APPLICATIONS // PERFORMANCE LEVEL

API: SG/CD
MIL: MIL-L-46152 E

This oil is suitable for the lubrication of gasoline and light diesel engines, with or without turbo from 1989 to 1996. This oil fulfills the latest specifications CCMC.

ACEA: E7-12
ACEA: E9-12
API: CJ-4/SM
CATERPILLAR: ECF-2
CATERPILLAR: ECF-3
CUMMINS: CES 20081
DETROIT DIESEL: 93K218
DEUTZ: DQC-III-10 LA

Suitable for all four-stroke diesel engines of trucks, with or without catalysts (e.g. SCR) or particulate filter. Meets most American and European manufacturers requirements and can also be used in older engines (Euro III and IV).

GLOBAL: DHD-1
JASO: DH-2
MACK: EO-O Premium Plus
MAN: M3575
MB: 228.31
MTU: Type 2.1
RENAULT: RLD-3
VOLVO: VDS-4

ACEA: A3/B4-12, E7-12
API: CI-4/SL
MB: 229.1
MAN: M 3275

This universal engine oil is suitable for the lubrication of gasoline and diesel engines, with or without turbo-loading, under heavy operating conditions and all the year round. This oil is excellent suitable for mixed fleets and can be applied in e.g. Euro 3 and Euro 4 engines. Due to its special composition longer drain intervals are possible with this motor oil.

Density at 15 °C	0.880 kg/l
Viscosity 40 °C	101.80 mm ² /s
Viscosity 100 °C	13.70 mm ² /s
Viscosity Index	134.00
Flash Point COC	215.00 °C
Pour Point	-33.00 °C
Total Base Number	4.90 mgKOH/g
Sulphate Ash	0.68 %
Viscosity -25 °C	6800.00 mPas

Density at 15 °C	0.874 kg/l
Viscosity 40 °C	108.70 mm ² /s
Viscosity 100 °C	14.50 mm ² /s
Viscosity Index	137.00
Flash Point COC	232.00 °C
Pour Point	-36.00 °C
Total Base Number	8.00 mgKOH/g
Sulphate Ash	0.92 %
Viscosity -25 °C	6880.00 mPas

Density at 15 °C	0.879 kg/l
Viscosity 40 °C	134.00 mm ² /s
Viscosity 100 °C	17.50 mm ² /s
Viscosity Index	144.00
Flash Point COC	215.00 °C
Pour Point	-35.00 °C
Total Base Number	10.70 mgKOH/g
Sulphate Ash	1.37 %
Viscosity -20 °C	6000.00 mPas



20W50 PRO-TEC CF-4 MINERAL

ACEA: A3/B4-98
ACEA: E2-Level
ALLISON: C4 Level
API: CF-4/SJ
CATERPILLAR: TO-2

MAN: 271
MB: 228.1
MTU: TYPE 1
VOLVO: VDS level

Because of its large field of application it is suitable for gasoline engines (multivalves, turbo, etc) and turbo diesel engines of passenger cars and heavy trucks, even with extended oil drain intervals.

Density at 15 °C	0.889 kg/l
Viscosity 40 °C	154.30 mm ² /s
Viscosity 100 °C	17.30 mm ² /s
Viscosity Index	122.00
Flash Point COC	226.00 °C
Pour Point	-30.00 °C
Total Base Number	10.00 mgKOH/g
Sulphate Ash	1.22 %
Viscosity -15 °C	7600.00 mPas



10W XD MONOGRADE MINERAL

ACEA: E2-96
API: SG/CF
CATERPILLAR SERIES 3
CATERPILLAR: TO-2
MB: 227.0/228.0
MAN: 270

This universal lubricating oil is suitable for gasoline and diesel engines, with or without supercharging.

Density at 15 °C	0.867 kg/l
Viscosity 40 °C	41.50 mm ² /s
Viscosity 100 °C	6.50 mm ² /s
Viscosity Index	119.00
Flash Point COC	212.00 °C
Pour Point	-30.00 °C
Total Base Number	7.1 mgKOH/g
Sulphate Ash	0.91 %
Viscosity -25 °C	6400 mPas



20W XD MONOGRADE MINERAL

ACEA: E2-96
API: SG/CF
MB: 227.0/228.0
MAN: 270

This universal lubricating oil is suitable for gasoline and diesel engines, with or without supercharging.

Density at 15 °C	0.879 kg/l
Viscosity 40 °C	54.60 mm ² /s
Viscosity 100 °C	8.09 mm ² /s
Viscosity Index	117.00
Flash Point COC	215.00 °C
Pour Point	-25.00 °C
Total Base Number	7.1 mgKOH/g
Sulphate Ash	0.91 %
Viscosity -25 °C	5200 mPas

FILDEX® PREMIUM MOTOR OIL



**30 XD MONOGRADE
MINERAL**



**40 HD MONOGRADE
MINERAL**



**50 HD MONOGRADE
MINERAL**

APPLICATIONS // PERFORMANCE LEVEL

ACEA: E2-96
API: SG/CF
CATERPILLAR: TO-2
CATERPILLAR: SERIES 3
MB: 227.0/228.0
MAN: 270

This universal lubricating oil is suitable for gasoline and diesel engines, with or without supercharging.

API: SF/CE
MB: 227.0
MIL: MIL-L-2104 C
MIL: MIL-L-2104 D
MIL: MIL-L-46152 B

This oil can be used for most diesel engines with or without a turbo and 4T-gasoline or LPG engines where an API class SF is required. This grade can also be used as a detergent hydraulic oil.

ACEA: E2-96
API: SG/CF
Meets the requirements
of MB 227.0/228.0
MAN: 270

This universal lubricating oil is suitable for gasoline and diesel engines, with or without supercharging.

Density at 15 °C	0.886 kg/l
Viscosity 40 °C	97.40 mm ² /s
Viscosity 100 °C	10.80 mm ² /s
Viscosity Index	107.00
Flash Point COC	230.00 °C
Pour Point	-25.00 °C
Total Base Number	7.1 mgKOH/g
Sulphate Ash	0.91 %

Density at 15 °C	0.891 kg/l
Viscosity 40 °C	148.80 mm ² /s
Viscosity 100 °C	15.10 mm ² /s
Viscosity Index	102.00
Flash Point COC	244.00 °C
Pour Point	-15.00 °C
Total Base Number	7.10 mgKOH/g
Sulphate Ash	0.91 %

Density at 15 °C	0.897 kg/l
Viscosity 40 °C	206.00 mm ² /s
Viscosity 100 °C	19.40 mm ² /s
Viscosity Index	107.00
Flash Point COC	255.00 °C
Pour Point	-15.00 °C
Total Base Number	7.10 mgKOH/g
Sulphate Ash	0.91 %

FILDEX® BRAKE FLUID

SUPERIOR
HIGH-TEMPERATURE
PERFORMANCE

MADE IN BELGIUM 
MADE IN GERMANY 



DOT-3

The product meets the requirements of the following specifications: FMVSS 116 DOT-3- SAE J1703- ISO 4925.



DOT-4

The product meets the requirements of the following specifications: FMVSS 116 DOT-4 - SAE J1703 and J1704 - ISO 4925.



DOT-5.1

The product meets the requirements of the following specifications: FMVSS 116 DOT-5.1- SAE J1703 and J1704 - ISO 4925.

Synthetic high temperature brake fluid to be used for ABS, drum or disc brake systems and hydraulic clutches of passenger vehicles and trucks.



AVAILABLE SIZES:

250ML

0.5L

1L



API
CERTIFIED

FILDEX[®] PREMIUM TRANSMISSION FLUID

PASSENGER CARS & SUVs

MADE IN BELGIUM



MADE IN GERMANY



AVAILABLE SIZES: 1L

4L

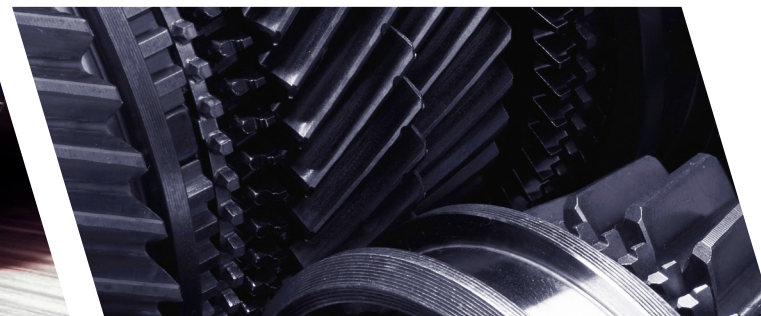
5L

20L

60L

210L

IBC





75W90 GEAR LS

FULLY SYNTHETIC

API: GL 4+ / GL-5 / LS
MIL: MIL-L-2105 C
MIL: MIL-L-2105 D

APPLICATIONS // PERFORMANCE LEVEL

This oil is mainly used in hypoid rear axles with a limited-slip mechanism, and transfer boxes of high power cars, SUVs and all-wheel drives (AWD). Suitable for SAE 75W90 and 75W85 applications.

Density at 15 °C	0.874 kg/l
Viscosity 40 °C	78.80 mm ² /s
Viscosity 100 °C	14.40 mm ² /s
Viscosity Index	192.00
Flash Point COC	172.00 °C
Pour Point	-45.00 °C



75W90 GEAR+

FULLY SYNTHETIC

API: GL-4+
MIL: MIL-L-2105
Meets the requirements of VW 501.50

This gear oil is used in gearboxes under very heavy duty conditions and should be used in gearboxes where mineral EP gear oils give switch problems.

Density at 15 °C	0.879 kg/l
Viscosity 40 °C	83.00 mm ² /s
Viscosity 100 °C	15.50 mm ² /s
Viscosity Index	188.00
Flash Point COC	180.00 °C
Pour Point	-45.00 °C



75W140 GEAR LS

FULLY SYNTHETIC

API: GL 4+ / GL-5 / LS
BMW: MSP/A
MIL: MIL-L-2105 C
MIL: MIL-L-2105 D

This product is used in highly loaded axles and reduction gears of cars, trucks and off-road equipment. It has "limited-slip" characteristics, and is specifically recommended for 4X4 vehicles.

Density at 15 °C	0.905 kg/l
Viscosity 40 °C	170.00 mm ² /s
Viscosity 100 °C	26.50 mm ² /s
Viscosity Index	195.00
Flash Point COC	160.00 °C
Pour Point	-51.00 °C

FILDEX® PREMIUM TRANSMISSION FLUID



75W140 GEAR S
FULLY SYNTHETIC



80W90 LS GEAR
MINERAL



75W80 POLY GEAR GO
FULLY SYNTHETIC

APPLICATIONS // PERFORMANCE LEVEL

API: GL 4+ / GL-5
BMW: MSP/A
MIL: MIL-L-2105 C
MIL: MIL-L-2105 D

This product is used in highly loaded axles and reduction gears of cars, trucks and off-road equipment. It has "limited-slip" characteristics, and is specifically recommended for 4X4 vehicles.

API: GL-5
MIL: MIL-L-2105 C
MIL: MIL-L-2105 D

This oil is mainly used in all hypoid rear axles with a limited-slip mechanism.

API: GL-4 +
FIAT: 9.55550-MX3
FIAT: 9.55550-MZ1
FORD: ESD-M2C186-A
FORD: WSD-M2C200-D
GM: 1940182
GM: 1940768
HONDA: MTF 94

MB: 235.10
NISSAN: MT-XZ
PSA: 9730 A8
PSA: B71 2330
VOLVO: 97308
VOLVO: 97309
VOLVO: 97310

Tested under strict conditions, this oil meets the general performance requirements of most brands and models in all weather conditions.

Density at 15 °C	0.876 kg/l
Viscosity 40 °C	188.00 mm ² /s
Viscosity 100 °C	25.80 mm ² /s
Viscosity Index	171.00
Flash Point COC	252.00 °C
Pour Point	-48.00 °C

Density at 15 °C	0.897 kg/l
Viscosity 40 °C	150.00 mm ² /s
Viscosity 100 °C	15.10 mm ² /s
Viscosity Index	100.00
Flash Point COC	210.00 °C
Pour Point	-30.00 °C

Density at 15 °C	0.849 kg/l
Viscosity 40 °C	38.30 mm ² /s
Viscosity 100 °C	7.31 mm ² /s
Viscosity Index	159.00
Flash Point COC	194.00 °C
Pour Point	-60.00 °C



90 LS GEAR MINERAL

API GL-5
MIL: MIL-L-2105D
ZF: TE-ML 05C (suitable for use)

This gear oil has especially been developed for the perfect lubrication of so-called "Limited Slip" and "Auto-Locking" hypoid transmissions.

Density at 15 °C	0.897 kg/l
Viscosity 40 °C	150.00 mm ² /s
Viscosity 100 °C	15.10 mm ² /s
Viscosity Index	100.00
Flash Point COC	210.00 °C
Pour Point	-30.00 °C



75W HD GEAR MINERAL

API: GL-5
MIL: MIL-L-2105D

This gear oil is used in hypoid differentials under very heavy-duty conditions and should be used in all transmissions that require EP-transmission oils.

Density at 15 °C	0.876 kg/l
Viscosity 40 °C	33.50 mm ² /s
Viscosity 100 °C	5.50 mm ² /s
Viscosity Index	98.00
Flash Point COC	205.00 °C
Pour Point	-40.00 °C



FILDEX® PREMIUM TRANSMISSION FLUID

TRUCKS & COMMERCIAL VEHICLES

MADE IN BELGIUM 

MADE IN GERMANY 



AVAILABLE SIZES: 1L 4L 5L 20L 60L 210L IBC



75W90 GEAR S
FULLY SYNTHETIC

APPLICATIONS // PERFORMANCE LEVEL

API: GL-4
API: GL-5
API: MT-1
ARVIN MERITOR: 0-76-N
DAF: GL5/MIL-PRF-2105E
IVECO: MIL-PRF-2105E
MACK: GO-J
MAN: 341 E-3
MAN: 341 Z-2

MAN: 342 M-3
MB: 235.8
MIL: PRF-2105E
RENAULT: B0032/3 Annex 3
SAE: J 2360
SCANIA: STO 1
ZF: TE-ML 02B
ZF: TE-ML 05B
ZF: TE-ML 07A

This oil is recommended for all components of mechanical transmissions (gear boxes, transfer boxes, differentials, etc.) of trucks and four-wheel drive vehicles.

Density at 15 °C	0.869 kg/l
Viscosity 40 °C	101.00 mm ² /s
Viscosity 100 °C	15.40 mm ² /s
Viscosity Index	161.00
Flash Point COC	202.00 °C
Pour Point	-50.00 °C
Total Base Number	2.10 mgKOH/g



75W80 POLY GEAR MTF FULLY SYNTHETIC

MAN: 341 E-3
MAN: 341 Z-4
MB: 235.4
VOLVO: 97305

ZF: TE-ML 01L
ZF: TE-ML 02L
ZF: TE-ML 08
ZF: TE-ML 16K

This product meets the requirements of many commercial vehicle builders and/or gearbox manufacturers, including DAF, IVECO, Eaton Europe (300.000 km or 3 years), Renault (in accordance with B0032/2 Annex 3) and Volvo.

Density at 15 °C	0.858 kg/l
Viscosity 40 °C	65.00 mm ² /s
Viscosity 100 °C	10.00 mm ² /s
Viscosity Index	156.00
Flash Point COC	218.00 °C
Pour Point	-45.00 °C



75W85 POLY GEAR FS FULLY SYNTHETIC

MAN: 341 E-3
MAN: 341 Z-4
MB: 235.4
VOLVO: 97305

ZF: TE-ML 01L
ZF: TE-ML 02L
ZF: TE-ML 08
ZF: TE-ML 16K

This product meets the requirements of some passenger cars and many commercial vehicle builders and/or gearbox manufacturers, including DAF, IVECO, Eaton Europe (300.000 km or 3 years), Renault (in accordance with B0032/2 Annex 3) and Volvo.

Density at 15 °C	0.860 kg/l
Viscosity 40 °C	57.90 mm ² /s
Viscosity 100 °C	9.75 mm ² /s
Viscosity Index	154.00
Flash Point COC	234.00 °C
Pour Point	-45.00 °C
Brookfield Viscosity at -40 °C	80000.00 mPas



80W90 H-EP GEAR MINERAL

API: GL-5
MAN: 342 M-1
MAN: 342 M-2
MIL: MIL-L-2105 C
MIL: MIL-L-2105 D
ZF: TE-ML 05A

ZF: TE-ML 07A
ZF: TE-ML 12E
ZF: TE-ML 16B
ZF: TE-ML 16C
ZF: TE-ML 17B
ZF: TE-ML 19B

Recommended for all hypoid transmissions and also suitable for spiral bevel gears, worm wheels and most transaxles.

Density at 15 °C	0.893 kg/l
Viscosity 40 °C	150.50 mm ² /s
Viscosity 100 °C	15.20 mm ² /s
Viscosity Index	102.00
Flash Point COC	214.00 °C
Pour Point	-27.00 °C

FILDEX® PREMIUM TRANSMISSION FLUID



85W140 H-EP GEAR
MINERAL



80W90 HD GEAR
MINERAL



80W HD GEAR
MINERAL

APPLICATIONS // PERFORMANCE LEVEL

API: GL-5
MIL: MIL-L-2105 C
MIL: MIL-L-2105 D
ZF: TE-ML 05A
ZF: TE-ML 07A
ZF: TE-ML 12E

ZF: TE-ML 16B
ZF: TE-ML 16C
ZF: TE-ML 16D
ZF: TE-ML 17B
ZF: TE-ML 19B

API: GL-4
MIL: MIL-L-2105

API: GL-4
MIL: MIL-L-2105

Recommended for all hypoid transmissions and also suitable for spiral bevel gears, worm wheels and most transaxles.

It is suitable for the lubrication of syncromesh gearboxes, transfer boxes, mechanical steering controls and most rear axles (certain rear axles should be run in with a GL5 oil).

It is suitable for the lubrication of syncromesh gearboxes, transfer boxes, mechanical steering controls and most rear axles (certain rear axles should be run in with a GL5 oil).

Density at 15 °C **0.903** kg/l
Viscosity 40 °C **356.80** mm²/s
Viscosity 100 °C **25.70** mm²/s
Viscosity Index **95.00**
Pour Point **-15.00** °C

Density at 15 °C **0.890** kg/l
Viscosity 40 °C **150.50** mm²/s
Viscosity 100 °C **15.20** mm²/s
Viscosity Index **102.00**
Flash Point COC **214.00** °C
Pour Point **-27.00** °C

Density at 15 °C **0.885** kg/l
Viscosity 40 °C **77.00** mm²/s
Viscosity 100 °C **9.50** mm²/s
Viscosity Index **98.00**
Flash Point COC **205.00** °C
Pour Point **-35.00** °C

FILDEX® AUTOMATIC TRANSMISSION FLUID

MADE IN BELGIUM MADE IN GERMANY 

1L



5L

AVAILABLE SIZES:

**ATF UNIVERSAL****FULLY SYNTHETIC**

AISIN-WARNER: JWS 3309	GM: DEXRON III-H
AISIN-WARNER: JWS 3314	HONDA: ATF Z-1
AISIN-WARNER: JWS 3317	HYUNDAI: SP-III
ALLISON: TES 295	MB: 236.10/236.11
BMW: ETL 7045E/8072B	MB: 236.3/236.7
BMW: LA 2634	NISSAN: MATIC-K
BMW: LT 71141	NISSAN: MATIC-W
CHRYSLER: ATF +3 AND +4	TOYOTA: TYPE T-IV
FIAT: 9.55550-AV4	VW: G 052 055
FORD: MERCON V	VW: G 052 162
FORD: WSS-M2C922-A1	VW: G 052 533
PSA: P/N Z 000169756	VW: G 052 990
	VW: G 055 025

Its versatile nature guarantees it can be used in automatic transmissions and torque converters for most passenger cars, off-road vehicles and SUVs.

Density at 15 °C	0.849 kg/l
Viscosity 40 °C	32.70 mm ² /s
Viscosity 100 °C	7.02 mm ² /s
Viscosity Index	184.00
Flash Point COC	218.00 °C
Pour Point	-48.00 °C
Brookfield Viscosity at -40 °C	12000.00 mPas
Color	Red



FILDEX® AUTOMATIC TRANSMISSION FLUID



ATF II
MINERAL



ATF III
MINERAL



ATF Z6
FULLY SYNTHETIC

APPLICATIONS // PERFORMANCE LEVEL

ALLISON : C4
CATERPILLAR: TO-2
FORD: M2C-138CJ, Mercon
GM: 6137-M DEXRON II-D
MAN: 339 V1/Z1
MB: 236.5MB: 236.7
VOITH: H55.6335xx

ZF: TE-ML 03D
ZF: TE-ML 04D
ZF: TE-ML 09
ZF: TE-ML 11A
ZF: TE-ML 14A
ZF: TE-ML 17C

ALLISON : C4
FORD: MERCON
GM: 6417-M DEXRON III-G
MAN: 339 V1/Z1
MB: 236.5
MB: 236.9
VOITH: H55.6335xx
VOLVO: STD 1273,40
(97340)

VOLVO: STD 1273,41
(97341)
ZF: TE-ML 03D
ZF: TE-ML 04D
ZF: TE-ML 09
ZF: TE-ML 11B
ZF: TE-ML 14A
ZF: TE-ML 17C

AML: 4G4319A509/AA/S
BENTLEY: PY112995PA
BMW: 83220142516
BMW: M-1375.4
HYUNDAI: 040000C90SG

JAGUAR: Fluid 8432
LAND ROVER: TYK500050
MASERATI: 231603
VW: G 055 005
ZF: TE-ML 11

It can be used in automatic transmissions, torque converters, power steering and hydraulic circuits, for which the manufacturers prescribe a product, which meets the General Motors ATF TYPE Dexron II-D requirements.

This oil is used in automatic transmissions, torque converters, power steering and hydraulic circuits, for which the manufacturers prescribe a product, which meets the General Motors ATF TYPE Dexron III or Dexron II E and Ford Mercon-requirements.

Mainly intended for the ZF-6 speed automatic transmissions, as fitted in BMW, Jaguar and Land Rover, it is also suitable for other OEMs, who recommend this type of fluid (e.g. Audi Quattro).

Density at 15 °C **0.867** kg/l
Viscosity 40 °C **37.40** mm²/s
Viscosity 100 °C **7.46** mm²/s
Viscosity Index **171.00**
Flash Point COC **198.00** °C
Pour Point **-48.00** °C
Total Base Number **2.40** mgKOH/g

Density at 15 °C **0.855** kg/l
Viscosity 40 °C **33.90** mm²/s
Viscosity 100 °C **7.10** mm²/s
Viscosity Index **179.00**
Flash Point COC **196.00** °C
Pour Point **-45.00** °C
Brookfield Viscosity at -40 °C **17500.00** mPas
Color **Red**

Density at 15 °C **0.845** kg/l
Viscosity 40 °C **31.00** mm²/s
Viscosity 100 °C **6.20** mm²/s
Viscosity Index **153.00**
Flash Point COC **202.00** °C
Pour Point **-48.00** °C
Brookfield Viscosity at -40 °C **9500.00** mPas
Color **Amber**



ATF DX 6

FULLY SYNTHETIC

GM: DEXRON VI
MB: 236.41
VOITH: H55.6335xx

This high quality ATF can be used in automatic transmissions with torque converters of passenger cars, as well as in wet clutches and power steering units.

Density at 15 °C	0.847 kg/l
Viscosity 40 °C	30.00 mm ² /s
Viscosity 100 °C	6.00 mm ² /s
Viscosity Index	151.00
Brookfield Viscosity at -40 °C	12000.00 mPas
Color	Red



ATF PRO CVT

FULLY SYNTHETIC

Meets the requirements of
Toyota ATF T-III/T-IV/D-II/WS
Nissan Matic Fluid C/D/J/K
Honda ATF-Z1
(except in CVTs)
Mazda ATF M-V
Hyundai/Kia SP-II/SP-III
Suzuki ATF 3314
GM Dexron IID/IIE/IIIG/IIIH,
TASA

This fluid may be used for automatic transmissions, which are applied in several Japanese cars with before mentioned specifications. It is recommended to follow the instructions of the manufacturer.

Density at 15 °C	0.846 kg/l
Viscosity 40 °C	36.60 mm ² /s
Viscosity 100 °C	7.20 mm ² /s
Viscosity Index	165.00
Flash Point COC	212.00 °C
Pour Point	-48.00 °C
Total Base Number	2.70 mgKOH/g

Ford Mercon/M2C
138CJ/166H/922A1/924AAi-
sin Warner: JWS 3309/3324,
Isuzu Besco ATF II/III
Allison: C4/TES-228, JASO M
315-2013 Type 1A
BMW: 7045E/8072B
Chrysler: ATF +3/ATF +4
VAG: G-055-025
Volvo: 1161540

ZF: TE-ML 09/11A/11B
Subaru: ATF/ATF 5AT/ATF HP/
Dexron II
MB: 236.1/236.6/236.7/236.8
/236.9/236.10

FILDEX® AUTOMATIC TRANSMISSION FLUID



ATF PLUS CVT FULLY SYNTHETIC



ATF 8 HP FULLY SYNTHETIC

APPLICATIONS // PERFORMANCE LEVEL

AUDI: TL 52180
DODGE: NS-2/CVTF+4
FORD: CVT23 FORD: CVT30
FORD: MERCON C
GM: SATURN DEX-CVT
HONDA: HCF-2
HONDA: HMMF
SUBARU: Lineartronic CVTF

SUZUKI: TC/NS-2/CVT Green 1
HYUNDAI: SP-CVT1
HYUNDAI: SP-III
JEEP: NS-2/CVTF+4
KIA: SP-CVT 1
KIA: SP-III
MB: 236.20
MINI: EZL799A

BMW: 83222152426
CHRYSLER: 68157995AA
FIAT: 9.55550-AV5
JAGUAR: 02JDE26444
LAND ROVER: LR023288
VW : 060 162

OEMs usually recommend specific CVT fluids for their transmissions. By carefully balancing base oils and advanced additives, it has become possible to formulate this fluid that meets the requirements of both European and Japanese CVT manufacturers. This product may not be used in some hybrid vehicles, requiring special fluids.

Exclusively intended for the ZF 6, 8 and 9 speed automatic transmissions, as fitted in VW, BMW, Jaguar, Land Rover, Jeep, Chrysler and FIAT group.

Density at 15 °C **0.852** kg/l
Viscosity 40 °C **34.20** mm²/s
Viscosity 100 °C **7.35** mm²/s
Viscosity Index **189.00**
Flash Point COC **210.00** °C
Brookfield Viscosity at -40 °C **10600.00** mPas

Density at 15 °C **0.845** kg/l
Viscosity 40 °C **28.10** mm²/s
Viscosity 100 °C **5.94** mm²/s
Viscosity Index **164.00**
Flash Point COC **210.00** °C
Brookfield Viscosity at -40 °C **9500.00** mPas
Color **Green**



ATF MB 15

FULLY SYNTHETIC

GM: DEXRON VI
MB: 236.41
VOITH: H55.6335xx

This product is recommended for sports vehicles (NAG2FE+) and is not backwards compatible with the previous 5- and 7- speed transmissions, which require MB 236.10, 236.12, 236.14.

Density at 15 °C	0.842 kg/l
Viscosity 40 °C	17.30 mm ² /s
Viscosity 100 °C	4.40 mm ² /s
Viscosity Index	172.00
Flash Point COC	178.00 °C
Brookfield Viscosity at -40 °C	3500.00 mPas



ATF S 41

FULLY SYNTHETIC

BENTLEY: PY112995PA
BMW: 8322 2152426
BMW: 8322 0144137
NISSAN: MATIC - S
SAAB: 93 165 147
TOYOTA: WS
BMW: M-1375.4 (8322 0142516)

Density at 15 °C	0.845 kg/l
Viscosity 40 °C	31.00 mm ² /s
Viscosity 100 °C	6.20 mm ² /s
Viscosity Index	153.00
Brookfield Viscosity at -40 °C	9500.00 mPas
Color	Amber

HYUNDAI: 040000C905G
MB: 236.12/236.14/236.41
Mitsubishi: SP-IV & ATF J-2
JWS: 3324
GM: DEXRON VI
JAGUAR: Fluid 8432
FORD: MERCON LV & SP
LAND ROVER: TYK500050

MASERATI: 231603
VW: G 055 005 A1/A2/A6
VW: G 060 162 A2
MAZDA FZ | HONDA DW-1
KIA / HYUNDAI SP-IV/ SPH-IV
ZF: Lifeguard Fluid 6 (S671 090 255)
ZF: Lifeguard Fluid 8

ATF S 41 is a synthetic automatic transmission oil, which has been especially developed for automatic gear boxes requiring low viscosity ATF. ATF S 41 ensures easy shifting under all operating temperatures, without unnecessary friction. Because of the low pour point and the high VI, ATF S 41 can be applied in a wide temperature range. Because of the excellent oxidation and thermal stability, ATF S 41 keeps its unique properties, so it easily meets the prescribed drain intervals. Mainly intended for the 6 or 8 speed automatic transmissions from ZF or other manufacturers, as fitted in BMW, Jaguar and Land Rover, it is also suitable for other OEMs, who recommend this type of fluid like Mercedes-Benz, Hyundai, Toyota. This transmission oil is very universal in use.

FILDEX® ANTIFREEZE & COOLANT



1L



5L

MADE IN BELGIUM 

MADE IN GERMANY 

AVAILABLE SIZES:



RED

ULTRA HEAT-TRANSFER CAPACITY
EXCELLENT LUBRICITY
ANTI-FOAM
ANTI-RUST

FILDEX® Red Antifreeze is a high quality mono ethylene glycol based coolant that effectively prevents rust formation and metal corrosion. The superior formulation of FILDEX® Red Antifreeze delivers optimum heat transfer in all climates, year round. The exceptional performance of this long lasting product allows it to continue working well beyond the other current products on the market.

PREMIXED  DO NOT ADD WATER



YELLOW

ULTRA HEAT-TRANSFER CAPACITY
EXCELLENT LUBRICITY
ANTI-FOAM
ANTI-RUST

FILDEX® Yellow Antifreeze is a long lasting coolant, based on mono ethylene glycol. Created for buses, trucks, and agricultural vehicles, this high-grade antifreeze provides exceptional protection against high temperature corrosion, prevents deposits from forming, and delivers outstanding lubricity.

PREMIXED  DO NOT ADD WATER



BLUE

ULTRA HEAT-TRANSFER CAPACITY
EXCELLENT LUBRICITY
ANTI-FOAM
ANTI-RUST

FILDEX® Blue Antifreeze is a superior combination of high grade mono ethylene glycol, treated de-mineralized water, and a high performance additive package. Recommended for cooling systems of luxury and modern vehicles, this high performing product guards against rust and corrosion and prolongs the pump bearing service life. FILDEX® Blue Antifreeze also delivers outstanding high temperature aluminum protection and low viscosity.

PREMIXED  DO NOT ADD WATER



GREEN

ULTRA HEAT-TRANSFER CAPACITY
EXCELLENT LUBRICITY
ANTI-FOAM
ANTI-RUST

FILDEX® Green Antifreeze is ideal for combustion engine cooling systems for all vehicle makes. FILDEX® Green Antifreeze delivers optimum heat transfer, excellent lubricity, and protects against rust and corrosion. This long service life product provides outstanding high temperature aluminum protection and can be used for all types of radiators.

PREMIXED  DO NOT ADD WATER



LONGER LIFE PERFORMANCE
RATED AT 3 YEARS

CONCENTRATED

ULTRA HEAT-TRANSFER CAPACITY
EXCELLENT LUBRICITY
ANTI-FOAM
ANTI-RUST

FILDEX® Concentrated Antifreeze is a mono ethylene glycol coolant and corrosion-inhibiting additive package that delivers advanced integrated engine protection. This concentrated antifreeze provides optimal protection against corrosion of all metals in vehicle cooling systems and can be applied to all types of radiators. To dilute the concentrated antifreeze, follow the instructions provided on the label.



LONGER LIFE PERFORMANCE RATED
AT 5 YEARS OR 250,000 KM

CARBOXYL

ULTRA HEAT-TRANSFER CAPACITY
EXCELLENT LUBRICITY
ANTI-FOAM
ANTI-RUST

FILDEX® Carboxyl Antifreeze is a premium, long life coolant that contains a unique blend of carboxyl acids. This antifreeze delivers longer lasting protection against rust and corrosion over other conventional coolants, providing longer service life for radiators, water pumps and seals. FILDEX® Premium Carboxyl protects vehicle cooling systems against frost and overheating.

PREMIXED  DO NOT ADD WATER



BECOME A FILDEX® AUTHORIZED DISTRIBUTOR

We always look for new markets in new countries to expand our distribution network. If you believe your company can establish a successful partnership with us, contact us to find out if you are qualified to apply for this opportunity.

We offer two types of distribution opportunities:

DEALER LICENSE:

Suitable for smaller companies with minimum annual purchase of \$50,000 USD to \$200,000 USD.

EXCLUSIVE DISTRIBUTION LICENSE:

*Suitable for bigger companies with large volume annual purchase to obtain the exclusive right of distribution in a specific country.
(Please contact us for details)*

*For more information, feel free to call our team at our toll free number
+1-888-909-0808 or visit **www.fildex.com***

WE ARE CURRENTLY LOOKING FOR
MORE **DISTRIBUTORS & RESELLERS** IN
FOLLOWING REGIONS:





**FILDEX
LUBES**

A COMBINATION OF WORLD BEST!
ENGINEERED IN CANADA | MANUFACTURED IN EUROPE

FILDEX® FILTERS CANADA CORP.

Head Office: 522-999 Canada Place, Vancouver, BC V6C 3T4, Canada

TEL: 1-778-945-0222 | FAX: 1-888-873-7090

EMAIL: sales@fildex.com

WWW.FILDEX.COM

Fildex Filters Canada Corp. is the sole owner of FILDEX® and FILDEX® PREMIUM FILTERS trademarks

For list of authorized distributors worldwide visit WWW.FILDEX.COM